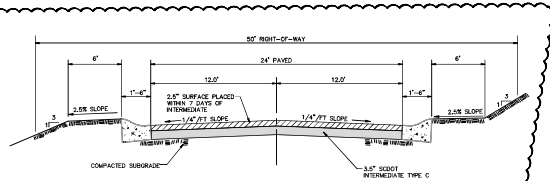
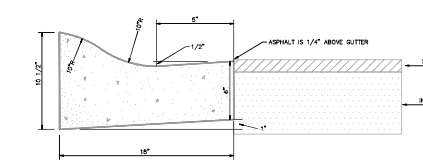


THIS DRAWING AND THE INFORMATION HEREON ARE THE PROPERTY OF K.B. SELLERS ENGINEERING, L.L.C. THE INFORMATION IS NOT TO BE REPRODUCED, COPIED, OR TRANSMITTED IN ANY FORM OR BY ANY MEANS, ELECTRONIC OR MECHANICAL, INCLUDING PHOTOCOPYING, RECORDING, OR BY ANY INFORMATION STORAGE AND RETRIEVAL SYSTEM, WITHOUT THE WRITTEN PERMISSION OF K.B. SELLERS ENGINEERING, L.L.C.



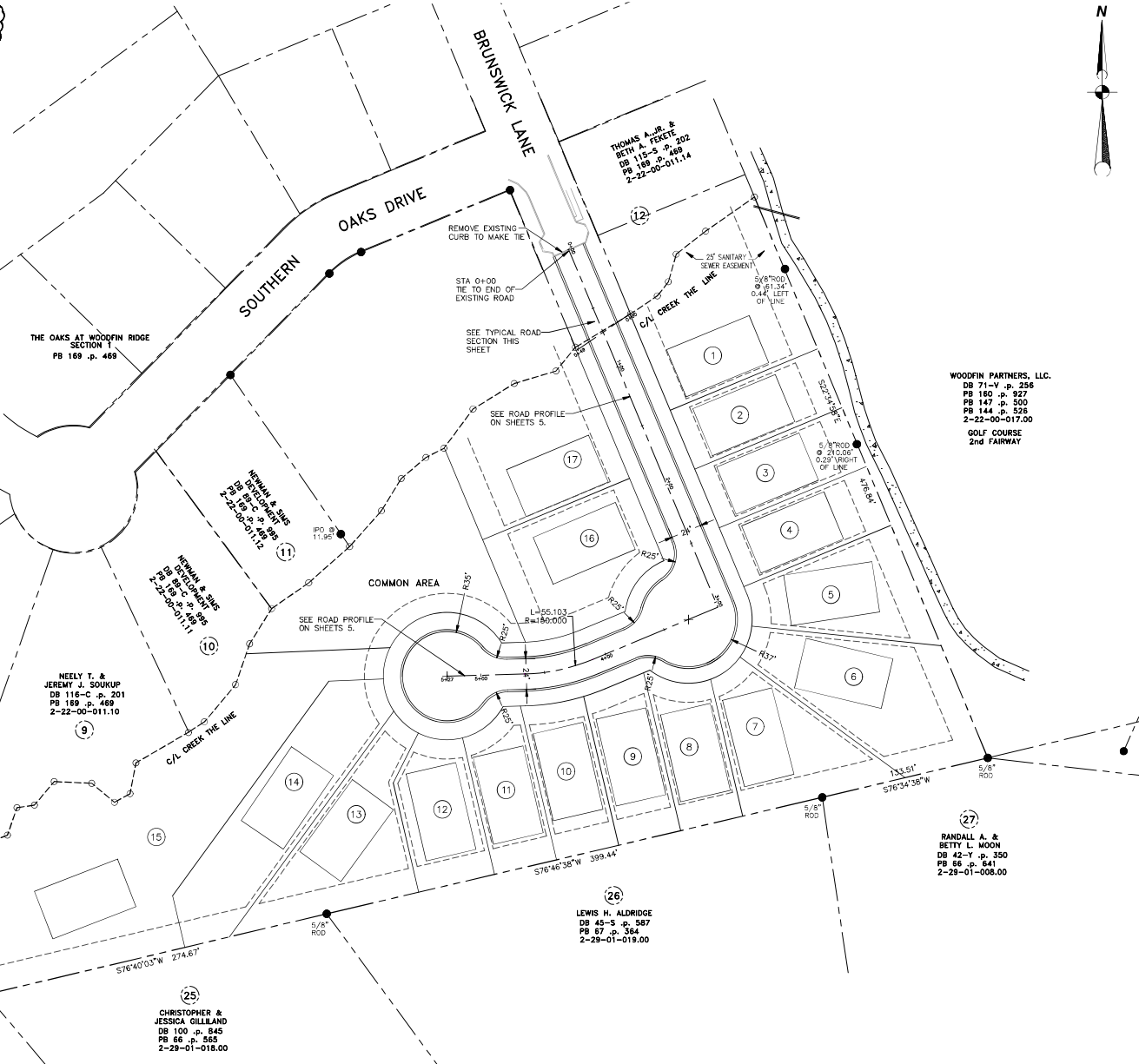
TYPICAL ROAD SECTION  
(N.T.S.)



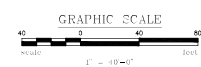
CONCRETE CURB AND GUTTER  
(ROLL)  
(N.T.S.)

- LEGEND**
- ADJOINER
  - - - SETBACK LINE
  - ▬ H.D. PAVEMENT
  - ▬ EXISTING CONCRETE
  - ▬ NEW CONCRETE
  - ▬ SLOPE FABRIC
  - SD □ SD EXISTING STORM DRAINAGE AND STRUCTURE
  - SD □ SD NEW STORM DRAINAGE AND STRUCTURE
  - 946 EXISTING CONTOUR LINE
  - 946 FINISHED CONTOUR LINE
  - 748.3TP X 748.8TW FINISHED SPOT GRADE, TOP OF SIDEWALK/PAVE
  - PP □ PP EXISTING POWER POLE, OVERHEAD ELECTRIC LINE AND GUY WIRE
  - X --- X FENCE LINE (WOOD OR CHAINLINK)
  - SS ⊕ SS EXISTING SEWER MAIN AND MANHOLE
  - W --- W EXISTING WATER MAIN WITH VALVE
  - G EXISTING GAS MAIN
  - T EXISTING TELEPHONE LINE
  - F FIBER OPTIC CABLE
  - FLOOD ZONE
  - IPF --- IPF PROPERTY LINE & IRON PIN FOUND OR SET
  - LD --- LD LIMITS OF DISTURBANCE
  - JS --- JS SILT FENCE
  - SS --- SS NEW SEWER SERVICE
  - W --- W NEW WATER SERVICE

CALL BEFORE YOU DIG!  
1-888-721-7877  
PALMETTO UTILITY LOCATION SERVICES



WOODFIN PARTNERS, LLC.  
DB 71-V p. 358  
PB 180 p. 927  
PB 147 p. 500  
PB 144 p. 526  
2-22-00-017.00  
GOLF COURSE  
2nd FAIRWAY



**NOTE:**  
ALL NEW ROADS AND STORM DRAINAGE CONSTRUCTION SHALL CONFORM TO THE SPARTANBURG COUNTY STANDARD SPECIFICATIONS FOR CONSTRUCTION OF ROADS, AUGUST 7 2018.

**K.B. SELLERS ENGINEERING**  
ENGINEERS & PLANNERS  
1000 S. WOODRIDGE BLVD. SUITE 200  
SPARTANBURG, SC 29583  
TEL: 803.582.1700  
WWW.KBSSELLERS.COM

Professional Engineer Seal for Travis R. Grady, License No. 11114, State of South Carolina, dated 07/03/19.

NO.	DATE	BY	REVISION
A	02/28/18	KMS	REVIEW SET
B	04/01/19	KMS	PER COUNTY
C	07/01/19	KMS	PER COUNTY

PROJECT TITLE: THE VILLAS AT WOODFIN RIDGE

SHEET TITLE: LOT LAYOUT

SHEET NO. 3	OF 10
PROJECT NO. 17-630	