



"SOMERSET"

2351 SQ. FT.



SOMERSET - FRONT ELEVATION "A" - (Brick w/ Board & Batten Siding)

SCALE: 1/4"=1'-0" AT 22'X34" LAYOUT 1/8"=1'-0" AT 11'X17" LAYOUT



SOMERSET - FRONT ELEVATION "B" - (Brick w/ Board & Batten Siding)

SCALE: 1/4"=1'-0" AT 22'X34" LAYOUT 1/8"=1'-0" AT 11'X17" LAYOUT



SOMERSET-FRONT ELEVATION "C" - (Brick w/ board & Batten Siding)

SCALE: 1/4"=1'-0" AT 22'X34" LAYOUT 1/8"=1'-0" AT 11'X17" LAYOUT

INTERNATIONAL RESIDENTIAL CODE, 2015 WITH LOCAL AMENDMENTS - PRESCRIPTIVE DECK DETAILS
INTERNATIONAL PLUMBING CODE, 2015 WITH LOCAL AMENDMENTS
INTERNATIONAL MECHANICAL CODE, 2015 WITH LOCAL AMENDMENTS
NATIONAL ELECTRIC CODE, 2014 EDITION
INTERNATIONAL ENERGY CONSERVATION CODE, 2015 WITH LOCAL AMENDMENTS

GENERAL NOTES DESIGNER: 2015 IRC

THESE DOCUMENTS ARE THE PROPERTY OF THE DESIGNER AND SHALL NOT BE COPIED, DUPLICATED, ALTERED, MODIFIED OR REVISED IN ANY WAY WITHOUT THE EXPRESSED WRITTEN APPROVAL OF THE DESIGNER.

CONTRACTOR SHALL VERIFY ALL CONDITIONS AND DIMENSIONS AT THE SITE AND ALL INCONSISTENCIES SHALL BE BROUGHT TO THE ATTENTION OF THE DEVELOPER AND THE DESIGNER BEFORE PROCEEDING WITH WORK.

ANY ERRORS OR OMISSIONS FOUND IN THESE DRAWINGS SHALL BE BROUGHT TO THE DEVELOPER AND DESIGNER'S ATTENTION IMMEDIATELY.

DO NOT SCALE DRAWINGS. WRITTEN DIMENSIONS TAKE PRECEDENCE OVER SCALED DIMENSIONS.

ALL DIMENSIONS ARE TO FACE OF STUD OR TO FACE OF FRAMING UNLESS OTHERWISE NOTED.

ALL TRUSS DRAWINGS TO BE REVIEWED AND APPROVED BY THE STRUCTURAL ENGINEER PRIOR TO ISSUANCE OF BUILDING PERMIT.

ALL OR EQUAL SUBSTITUTIONS MUST BE SUBMITTED TO AN APPROVED BY CITY BUILDING OFFICIAL PRIOR TO INSTALLATION.

ALL ANGLED PARTITIONS ARE 45 DEGREES UNLESS OTHERWISE NOTED.

PROVIDE FIREBLOCKING, (PER IRC SECTION R602.8)

ALL ELECTRICAL AND MECHANICAL EQUIPMENT AND METERS ARE SUBJECT TO RELOCATION DUE TO FIELD CONDITIONS, CONTRACTOR TO VERIFY.

PROVIDE BLOCKING AND/OR BACKING AT ALL TOWEL BAR, TOWEL RING AND/OR TOILET PAPER HOLDER LOCATIONS, AS SHOWN PER PLAN. TYPICAL AT ALL BATHROOMS AND POWER ROOMS. VERIFY LOCATIONS AT FRAMING WALK.

POLYMER-ENHANCED ASPHALT LIQUID-APPLIED MEMBRANE WATERPROOFING: FURNISH AND INSTALL ALL WATERPROOFING COMPLETE. A 60 MIL SELF-ADHERING MEMBRANE OF SPRAYED ON POLYMER ENHANCED ASPHALT. INSTALL PER MANUFACTURER'S AND TRADE ASSOCIATION'S PRINTED INSTALLATION INSTRUCTIONS.

TO THE BEST OF THE DESIGNER'S KNOWLEDGE THESE DOCUMENTS ARE IN CONFORMANCE WITH THE REQUIREMENTS OF THE BUILDING AUTHORITIES HAVING JURISDICTION OVER THIS TYPE OF CONSTRUCTION AND OCCUPANCY.

SHOP DRAWING REVIEW AND DISTRIBUTION, ALONG WITH PRODUCT SUBMITTALS, REQUESTED IN THE CONSTRUCTION DOCUMENTS, SHALL BE THE SOLE RESPONSIBILITY OF THE GENERAL CONTRACTOR, UNLESS DIRECTED OTHERWISE UNDER A SEPARATE AGREEMENT.

DEVIATIONS FROM THESE DOCUMENTS IN THE CONSTRUCTION PHASE SHALL BE REVIEWED BY THE DESIGNER AND THE OWNER PRIOR TO THE START OF WORK IN QUESTION. ANY DEVIATIONS FROM THESE DOCUMENTS WITHOUT PRIOR REVIEW, SHALL BE SHALL BE THE SOLE RESPONSIBILITY OF THE GENERAL CONTRACTOR.

THE GENERAL CONTRACTOR SHALL BE RESPONSIBLE FOR ALL WORK AND MATERIALS REPRESENTED ON THESE DOCUMENTS INCLUDING THE WORK AND MATERIALS FURNISHED BY SUBCONTRACTORS AND VENDORS.

THE BUILDER SHALL FURNISH ANY AND ALL REPORTS RECEIVED FROM THE GEOTECHNICAL ENGINEER (SOILS REPORT), ON THE STUDY OF THE PROPOSED SITE, TO THE DESIGNER, STRUCTURAL ENGINEER, AND GENERAL CONTRACTOR. IN THE EVENT THE GEOTECHNICAL REPORTS DO NOT EXIST, THE SOILS CONDITIONS SHALL BE ASSUMED TO BE A MINIMUM DESIGN SOIL PRESSURE STATED BY THE STRUCTURAL ENGINEER OF RECORD FOR THE PURPOSE OF STRUCTURAL DESIGN. GENERAL CONTRACTOR SHALL ASSURE THE SOIL CONDITIONS MEET OR EXCEED THE CRITERIA.

ALL WORK PERFORMED BY THE GENERAL CONTRACTOR SHALL COMPLY AND CONFORM WITH LOCAL AND STATE BUILDING CODES, ORDINANCES AND REGULATIONS, ALONG WITH ALL OTHER AUTHORITIES HAVING JURISDICTION. THE GENERAL CONTRACTOR IS RESPONSIBLE TO BE AWARE OF THESE REQUIREMENTS AND GOVERNING REGULATIONS.

PROVIDE AN APPROVED WASHER DRAIN PAN AT SECOND FLOOR ONLY THAT DRAINS TO EXTERIOR.

WINDOW SUPPLIER TO VERIFY AT LEAST ONE WINDOW IN ALL BEDROOMS TO HAVE A CLEAR EGRESS OPENING OF 5.7 SQ FT WITH MIN. DIMENSION OF 24" IN HEIGHT AND 20" IN WIDTH. SHILL HEIGHT NOT GREATER THAN 44" ABOVE FLOOR. (PER IRC SECTION R310.1.1)

ALL HANDRAIL BALLUSTERS TO BE SPACED SUCH THAT A 4" SPHERE CANNOT PASS BETWEEN BALLUSTERS. (PER IRC SECTION R312.1.3)

PROVIDE STAIR HANDRAILS AND GUARDRAILS PER IRC SECTION R311.7.8 AND R312.

SOMERSET SQUARE FOOTAGES	
AREA	2351 SF
FIRST FLOOR	1778 SF
SECOND FLOOR	573 SF
TOTAL LIVING	2351 SF
FRONT PORCH	0 SF
COVERED PATIO	169 SF
GARAGE	481 SF

SHEET INDEX	
SHEET #	DESCRIPTION
CS-1.0	COVER SHEET
GN-1.0	GENERAL NOTES & SPECS
F-1.0	SLAB FOUNDATION PLAN
A-1.0	FIRST FLOOR & ATTIC STORAGE PLAN
A-2.0	CROSS SECTION
A-3.1A	ROOF PLAN - A
A-3.1B	ROOF PLAN - B
A-3.1C	ROOF PLAN - C
A-4.1	FRONT & LEFT EXTERIOR ELEVATION - A
A-4.2	REAR & RIGHT EXTERIOR ELEVATION - A
A-4.3	FRONT & LEFT EXTERIOR ELEVATION - B
A-4.4	REAR & RIGHT EXTERIOR ELEVATION - B
A-4.5	FRONT & LEFT EXTERIOR ELEVATION - C
A-4.6	REAR & RIGHT EXTERIOR ELEVATION - C
D1.0	DETAILS
D1.1	DETAILS
E-1.0	FIRST FLOOR & ATTIC ELECTRIC PLAN

These plans and specifications are protected under federal copyright laws. They may not be reproduced, altered, replicated or assigned to a third party without the expressed written consent from Obsidian Construction, LLC

OBSIDIAN
CONSTRUCTION, LLC

SOMERSET

Single Family

RELEASED FOR CONSTRUCTION

REV.	DATE
#-1	8.28.19
#-2	7.20.20
#-3	7.25.20
#-4	7.30.20
#-5	10.14.20

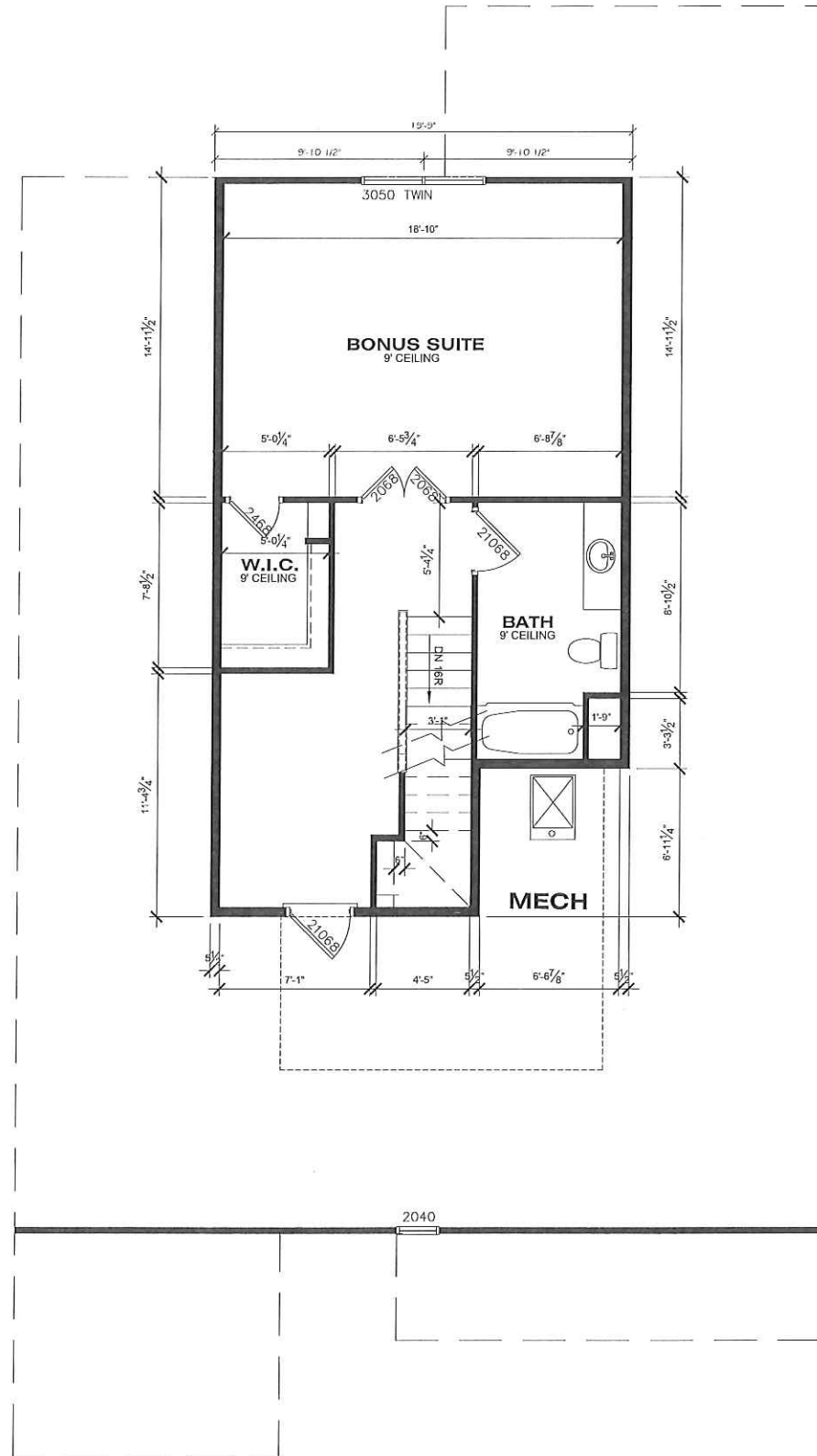
DRAWN BY: ACK

CHECKED BY: XX

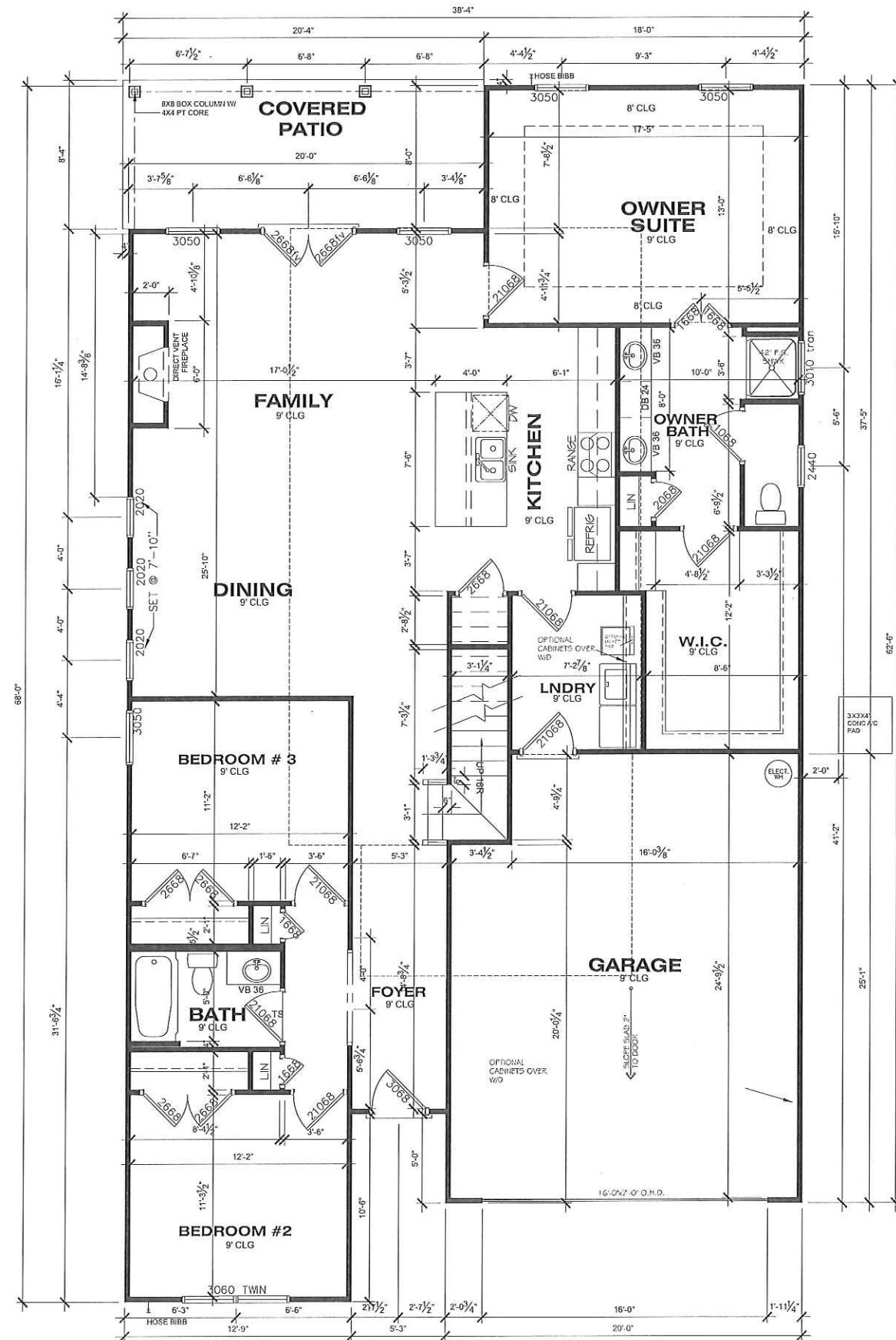
DATE: 08-15-18

SHEET NUMBER:

CS-1.0



ATTIC LOFT FLOOR PLAN - SOMERSET
SCALE: 1/4"=1'-0" AT 22X34" LAYOUT 1/8"=1'-0" AT 11X17" LAYOUT



FIRST FLOOR PLAN - SOMERSET
SCALE: 1/4"=1'-0" AT 22X34" LAYOUT 1/8"=1'-0" AT 11X17" LAYOUT

SOMERSET SQUARE FOOTAGES	
AREA	2351 SF
FIRST FLOOR	1776 SF
SECOND FLOOR	573 SF
TOTAL LIVING	2351 SF
FRONT PORCH	0 SF
COVERED PATIO	169 SF
GARAGE	461 SF

DO NOT SCALE DRAWINGS
DIMENSIONS TAKE PRECEDENCE OVER ACTUAL SCALE OF DRAWINGS.

SOMERSET

Single Family

RELEASED FOR CONSTRUCTION

REV.	DATE
#-1	8.28.19
#-2	7.20.20
#-3	7.25.20
#-4	7.30.20
#-5	10.14.20

DRAWN BY: ACK

CHECKED BY: XX

DATE: 08-15-18

SHEET NUMBER:

A1.0



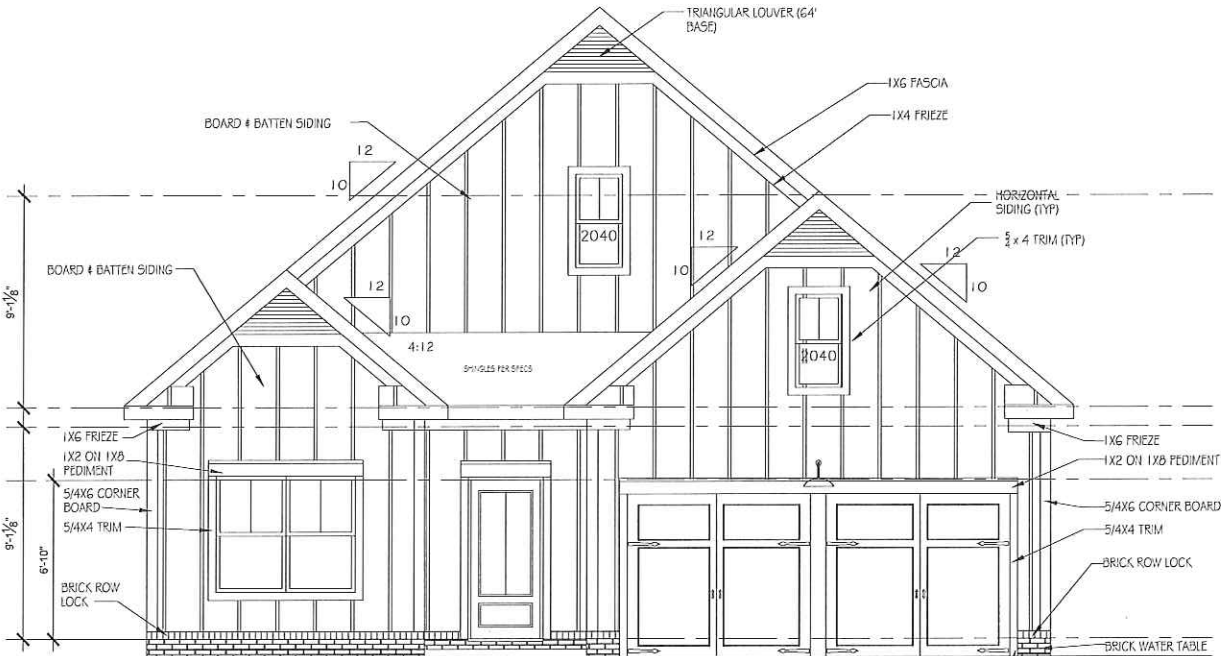
These plans and specifications are protected under federal copyright laws. They may not be reproduced, altered, replicated or assigned to a third party without the expressed written consent from Obsidian Construction, LLC

ELEVATION NOTES:

- GRADE CONDITIONS MAY VARY FOR INDIVIDUAL SITE FROM THAT SHOWN
- WINDOW HEAD HEIGHTS:
 - BASEMENT = 7'-0" U.N.O. ON ELEVATIONS
 - 1ST FLOOR = 8'-0" U.N.O. ON ELEVATIONS
 - 2ND FLOOR = 8'-0" U.N.O. ON ELEVATIONS
- ROOFING: PITCHED SHINGLES PER DEVELOPER
- WINDOWS: MANUFACTURER PER DEVELOPER, DIVIDED LIGHTS AS SHOWN ON THE EXTERIOR ELEVATIONS
- ENTRY DOORS: AS SELECTED BY DEVELOPER, RAISED PANEL AS SHOWN
- CHIMNEY AS OCCURS: TOP OF CHIMNEYS TO BE MINIMUM OF 24" ABOVE ANY ROOF WITH IN 10'-0" OF CHIMNEY
- ALL EXTERIOR MATERIALS TO BE INSTALLED PER MANUFACTURERS WRITTEN INSTRUCTIONS
- PROTECTION AGAINST DECAY:
 - (ALL PORTIONS OF A PORCH, SCREEN PORCH OR DECK FROM THE BOTTOM OF THE HEADER DOWN, INCLUDING POST, RAILS, PICKETS, STEPS AND FLOOR STRUCTURE.)

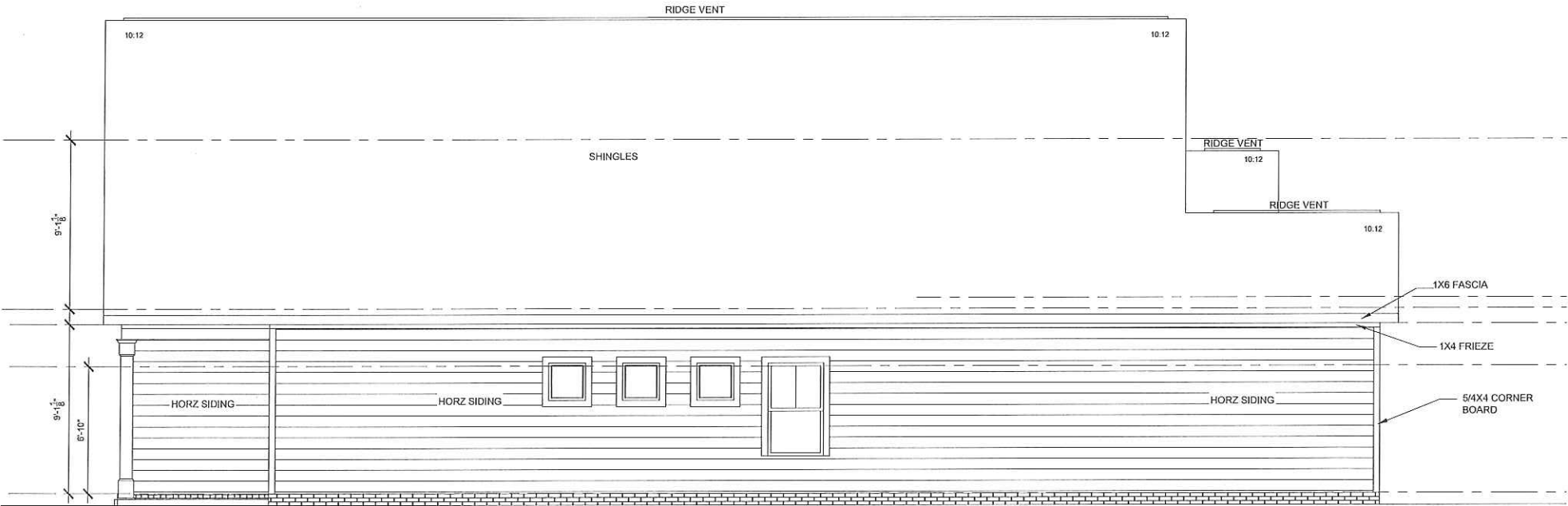
KEY NOTES:

- | MASONRY: | SIDING: |
|---|--|
| 1 ADHERED STONE VENEER AS SELECTED BY DEVELOPER, HEIGHT AS NOTED | 12 FIBER CEMENT SHAKE SIDING PER DEVELOPER W/ 5/4 X 4 CORNER TRIM BOARDS |
| 2 MASONRY FULL BRICK AS SELECTED BY DEVELOPER, HEIGHT AS NOTED | 13 FIBER CEMENT LAP SIDING PER DEVELOPER W/ 5/4 X 4 CORNER TRIM BOARDS |
| 3 MASONRY FULL STONE AS SELECTED BY DEVELOPER, HEIGHT AS NOTED | 14 FIBER CEMENT WAVY SIDING PER DEVELOPER W/ 5/4 X 4 CORNER TRIM BOARDS |
| 4 8" SOLDIER COURSE | 15 FIBER CEMENT PANEL SIDING W/ 1 X 3 BATTS @ 12" O.C. (VINYL BOARD AND BATT SIDING) |
| 5 ROWLOCK COURSE | 16 1X FIBER CEMENT TRIM OR EQUAL, U.N.O. SIZE AS NOTED |
| 6 DECORATIVE KEY: SEE DETAIL | 17 FALSE WOOD SHUTTERS, TYP. AS SHOWN SIZE AS NOTED |
| 7 CORROSION RESISTANT SCREEN LOUVERED VENTS, SIZE AS NOTED | |
| 8 CODE APPROVED TERMINATION CHIMNEY CAP | |
| 9 CORROSION RESISTANT ROOF TO WALL FLASHING, CODE COMPLIANT FLASHING MUST BE INSTALLED AT ALL ROOF/WALL INTERSECTIONS | ALL WINDOWS WHOSE OPENING IS LESS THAN 24" ADV. THE FINISH FLOOR AND WHOSE OPENING IS GREATER THAN 72" ABOVE THE OUTSIDE WALKING SURFACE MUST HAVE WINDOW OPENING LIMITING DEVICES COMPLYING WITH THE 2012 IRC SECTION R312.2. |
| 10 STANDING SEAM METAL ROOF, INSTALL PER MANUFACTURERS WRITTEN INSTRUCTIONS | |
| 11 DECORATIVE WROUGHT IRON: SEE DETAILS | |



SOMERSET - FRONT ELEVATION "A" - (Brick w/ Board & Batten Siding)

SCALE: 1/4"=1'-0" AT 22'X34" LAYOUT 1/8"=1'-0" AT 11'X17" LAYOUT



SOMERSET - LEFT SIDE ELEVATION "A"

SCALE: 1/4"=1'-0" AT 22'X34" LAYOUT 1/8"=1'-0" AT 11'X17" LAYOUT

These plans and specifications are protected under federal copyright laws. They may not be reproduced, altered, replicated or assigned to a third party without the expressed written consent from Obsidian Construction, LLC



DO NOT SCALE DRAWINGS
DIMENSIONS TAKE PRECEDENCE OVER ACTUAL SCALE OF DRAWINGS.

SOMERSET
Single Family
RELEASED FOR CONSTRUCTION

REV.	DATE
#-1	8.28.19
#-2	7.20.20
#-3	7.25.20
#-4	7.30.20
#-5	10.14.20

DRAWN BY: ACK

CHECKED BY: XX

DATE: 08-15-18

SHEET NUMBER:

A4.1.1

ELEVATION NOTES:

- GRADE CONDITIONS MAY VARY FOR INDIVIDUAL SITE FROM THAT SHOWN
- WINDOW HEAD HEIGHTS:
 - BASEMENT = 7'-0" U.N.O. ON ELEVATIONS
 - 1ST FLOOR = 8'-0" U.N.O. ON ELEVATIONS
 - 2ND FLOOR = 8'-0" U.N.O. ON ELEVATIONS
- ROOFING PITCHED SHINGLES PER DEVELOPER
- WINDOWS: MANUFACTURER PER DEVELOPER, DIVIDED LIGHTS AS SHOWN ON THE EXTERIOR ELEVATIONS
- ENTRY DOORS: AS SELECTED BY DEVELOPER, RAISED PANEL AS SHOWN
- CHIMNEY AS OCCURS: TOP OF CHIMNEYS TO BE MINIMUM OF 24" ABOVE ANY ROOF WITH IN 10'-0" OF CHIMNEY
- ALL EXTERIOR MATERIALS TO BE INSTALLED PER MANUFACTURER'S WRITTEN INSTRUCTIONS
- PROTECTION AGAINST DECAY:
 - (ALL PORTIONS OF A PORCH, SCREEN PORCH OR DECK FROM THE BOTTOM OF THE HEADER DOWN, INCLUDING POST, RAILS, PICKETS, STEPS AND FLOOR STRUCTURE.)

KEY NOTES:

- MASONRY:**

 - 1 ADHERED STONE VENER AS SELECTED BY DEVELOPER, HEIGHT AS NOTED
 - 2 MASONRY FULL BRICK AS SELECTED BY DEVELOPER, HEIGHT AS NOTED
 - 3 MASONRY FULL STONE AS SELECTED BY DEVELOPER, HEIGHT AS NOTED
 - 4 8" SOLDIER COURSE
 - 5 ROWLOCK COURSE
 - 6 DECORATIVE KEY. SEE DETAIL
 - 7 CORROSION RESISTANT SCREEN LOUVERED VENTS, SIZE AS NOTED
 - 8 CODE APPROVED TERMINATION CHIMNEY CAP
 - 9 CORROSION RESISTANT ROOF TO WALL FLASHING. CODE COMPLIANT FLASHING MUST BE INSTALLED AT ALL ROOF/WALL INTERSECTIONS
 - 10 STANDING SEAM METAL ROOF, INSTALL PER MANUFACTURER'S WRITTEN INSTRUCTIONS
 - 11 DECORATIVE WROUGHT IRON. SEE DETAILS
- SIDING:**

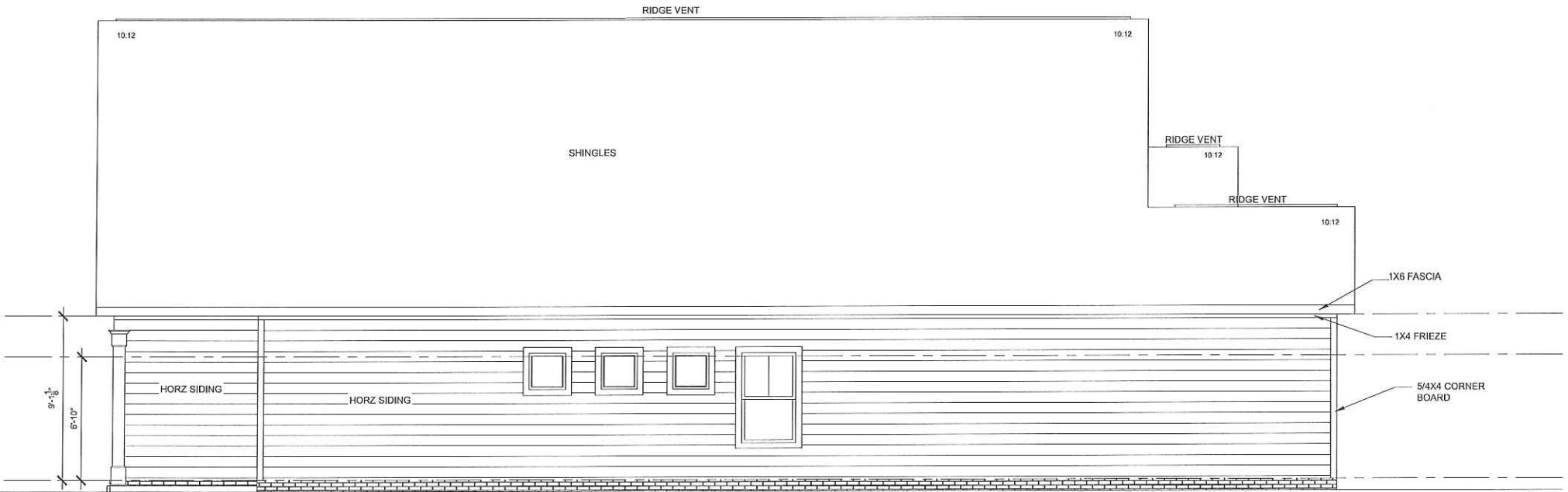
 - 12 FIBER CEMENT SHAKE SIDING PER DEVELOPER W/ 5/4 X 4 CORNER TRIM BOARDS
 - 13 FIBER CEMENT LAP SIDING PER DEVELOPER W/ 5/4 X 4 CORNER TRIM BOARDS
 - 14 FIBER CEMENT WAVY SIDING PER DEVELOPER W/ 5/4 X 4 CORNER TRIM BOARDS
 - 15 FIBER CEMENT PANE SIDING W/ 1 X 3 BATTS @ 12" O.C. (VINYL BOARD AND BATT SIDING)
 - 16 1X FIBER CEMENT TRIM OR EQUAL, U.N.O. SIZE AS NOTED
 - 17 FALSE WOOD SHUTTERS, TYP. AS SHOWN SIZE AS NOTED

ALL WINDOWS WHOSE OPENING IS LESS THAN 24" ABV. THE FINISH FLOOR AND WHOSE OPENING IS GREATER THAN 72" ABOVE THE OUTSIDE WALKING SURFACE MUST HAVE WINDOW OPENING LIMITING DEVICES COMPLYING WITH THE 2012 IRC SECTION R3102.2.



SOMERSET - FRONT ELEVATION "B" - (Brick w/ Board & Batten Siding)

SCALE: 1/4"=1'-0" AT 22'X34' LAYOUT 1/8"=1'-0" AT 11'X17' LAYOUT



SOMERSET - LEFT SIDE ELEVATION "B"

SCALE: 1/4"=1'-0" AT 22'X34' LAYOUT 1/8"=1'-0" AT 11'X17' LAYOUT

These plans and specifications are protected under federal copyright laws. They may not be reproduced, altered, replicated or assigned to a third party without the expressed written consent from Obsidian Construction, LLC



SOMERSET
Single Family
RELEASED FOR CONSTRUCTION

REV.	DATE
#-1	8.28.19
#-2	7.20.20
#-3	7.25.20
#-4	7.30.20
#-5	10.14.20

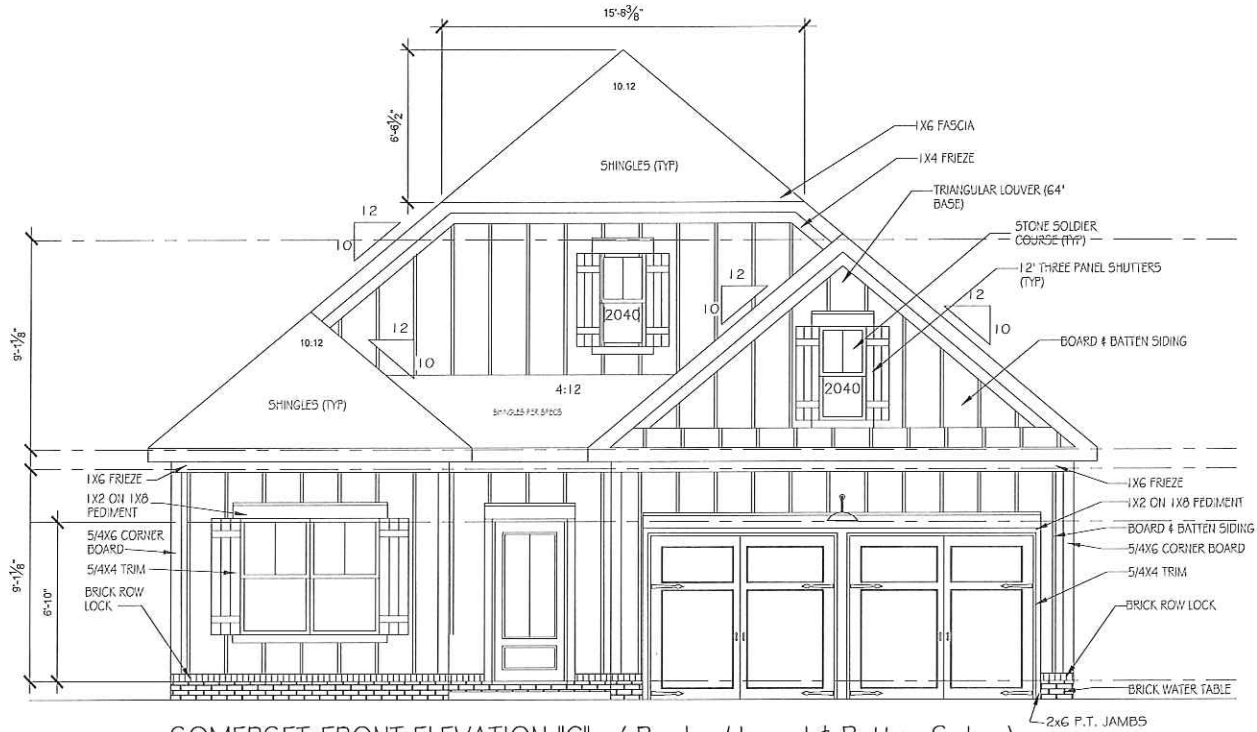
DRAWN BY: ACK
CHECKED BY: XX
DATE: 08-15-18
SHEET NUMBER:

ELEVATION NOTES:

- GRADE CONDITIONS MAY VARY FOR INDIVIDUAL SITE FROM THAT SHOWN
- WINDOW HEAD HEIGHTS:
 - BASEMENT = 7'-0" U.N.O. ON ELEVATIONS
 - 1ST FLOOR = 8'-0" U.N.O. ON ELEVATIONS
 - 2ND FLOOR = 8'-0" U.N.O. ON ELEVATIONS
- ROOFING PITCHED SHINGLES PER DEVELOPER
- WINDOWS: MANUFACTURER PER DEVELOPER, DIVIDED LIGHTS AS SHOWN ON THE EXTERIOR ELEVATIONS
- ENTRY DOORS: AS SELECTED BY DEVELOPER, RAISED PANEL AS SHOWN
- CHIMNEY AS OCCURS: TOP OF CHIMNEYS TO BE MINIMUM OF 24" ABOVE ANY ROOF WITH IN 10'-0" OF CHIMNEY
- ALL EXTERIOR MATERIALS TO BE INSTALLED PER MANUFACTURERS WRITTEN INSTRUCTIONS
- PROTECTION AGAINST DECAY:
 - (ALL PORTIONS OF A PORCH, SCREEN PORCH OR DECK FROM THE BOTTOM OF THE HEADER DOWN, INCLUDING POST, RAILS, PICKETS, STEPS AND FLOOR STRUCTURE.)

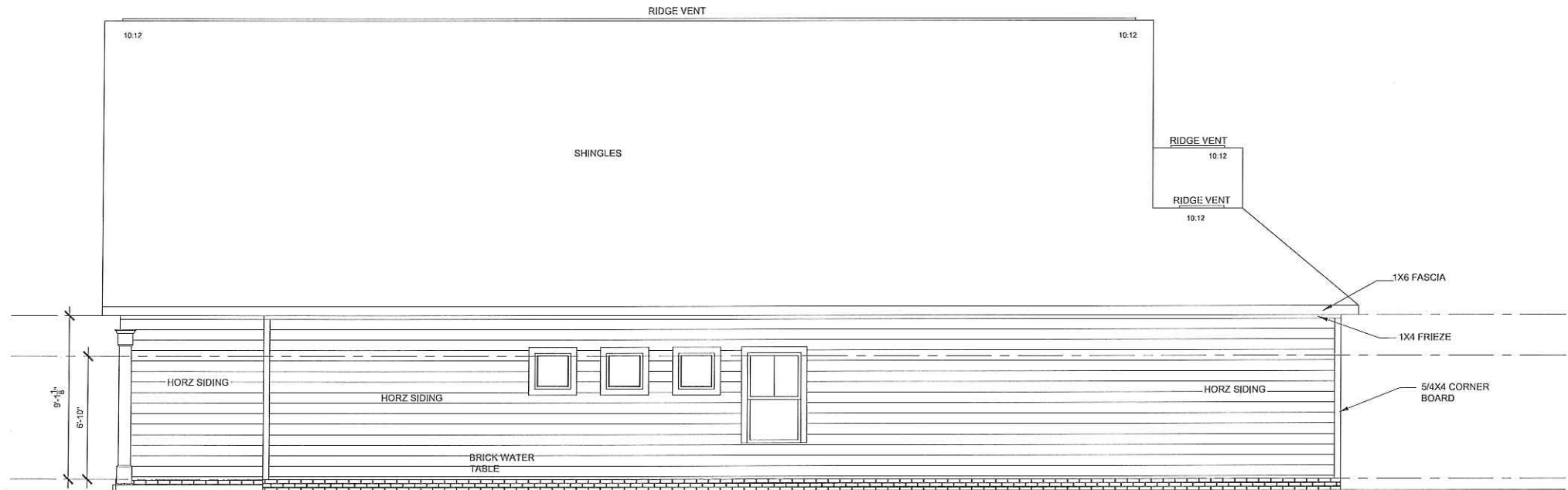
KEY NOTES:

- | MASONRY: | SIDING: |
|---|---|
| [1] ADHERED STONE VENEER AS SELECTED BY DEVELOPER, HEIGHT AS NOTED | [12] FIBER CEMENT SHAKE SIDING PER DEVELOPER W/ 5/4 X 4 CORNER TRIM BOARDS |
| [2] MASONRY FULL BRICK AS SELECTED BY DEVELOPER, HEIGHT AS NOTED | [13] FIBER CEMENT LAP SIDING PER DEVELOPER W/ 5/4 X 4 CORNER TRIM BOARDS |
| [3] MASONRY FULL STONE AS SELECTED BY DEVELOPER, HEIGHT AS NOTED | [14] FIBER CEMENT WAVY SIDING PER DEVELOPER W/ 5/4 X 4 CORNER TRIM BOARDS |
| [4] 6" SOLDIER COURSE | [15] FIBER CEMENT PANE SIDING W/ 1 X 3 BATTS @ 12" O.C. (VINYL BOARD AND BATT SIDING) |
| [5] ROWLOCK COURSE | [16] 1X FIBER CEMENT TRIM OR EQUAL, U.N.O. SIZE AS NOTED |
| [6] DECORATIVE KEY: SEE DETAIL | [17] FALSE WOOD SHUTTERS, TYP. AS SHOWN SIZE AS NOTED |
| [7] CORROSION RESISTANT SCREEN LOUVERED VENTS, SIZE AS NOTED | |
| [8] CODE APPROVED TERMINATION CHIMNEY CAP | |
| [9] CORROSION RESISTANT ROOF TO WALL FLASHING, CODE COMPLIANT FLASHING MUST BE INSTALLED AT ALL ROOF/WALL INTERSECTIONS | |
| [10] STANDING SEAM METAL ROOF, INSTALL PER MANUFACTURERS WRITTEN INSTRUCTIONS | |
| [11] DECORATIVE WROUGHT IRON. SEE DETAILS | |
- ALL WINDOWS WHOSE OPENING IS LESS THAN 24" ABV. THE FINISH FLOOR AND WHOSE OPENING IS GREATER THAN 72" ABOVE THE OUTSIDE WALKING SURFACE MUST HAVE WINDOW OPENING LIMITING DEVICES COMPLYING WITH THE 2012 IRC SECTION R312.2.



SOMERSET-FRONT ELEVATION "C" - (Brick w/ board & Batten Siding)

SCALE: 1/4"=1'-0" AT 22'X34' LAYOUT 1/8"=1'-0" AT 11'X17' LAYOUT



SOMERSET - LEFT SIDE ELEVATION "C"

SCALE: 1/4"=1'-0" AT 22'X34' LAYOUT 1/8"=1'-0" AT 11'X17' LAYOUT

These plans and specifications are prepared by the architect. They may not be reproduced, altered, replicated or assigned to a third party without the expressed written consent from Obsidian Construction, LLC

OBSIDIAN
CONSTRUCTION, LLC

DO NOT SCALE DRAWINGS
DIMENSIONS TAKE PRECEDENCE OVER ACTUAL SCALE OF DRAWINGS

SOMERSET
Single Family
RELEASED FOR CONSTRUCTION

REV.	DATE
#-1	8.28.19
#-2	7.20.20
#-3	7.25.20
#-4	7.30.20
#-5	10.14.20

DRAWN BY: ACK

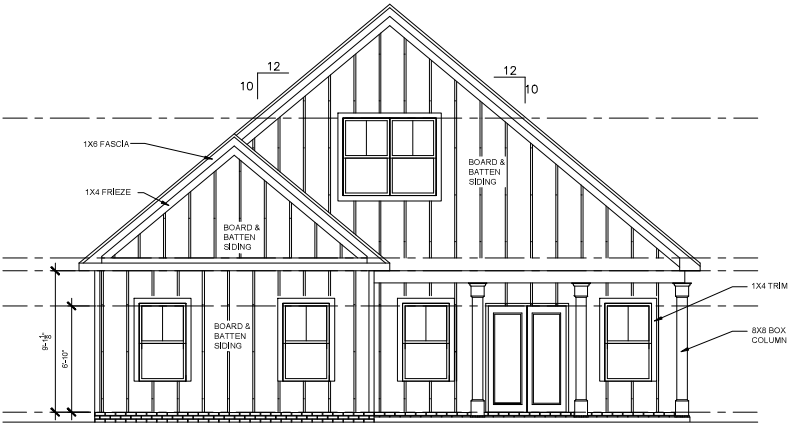
CHECKED BY: XX

DATE: 08-15-18

SHEET NUMBER:

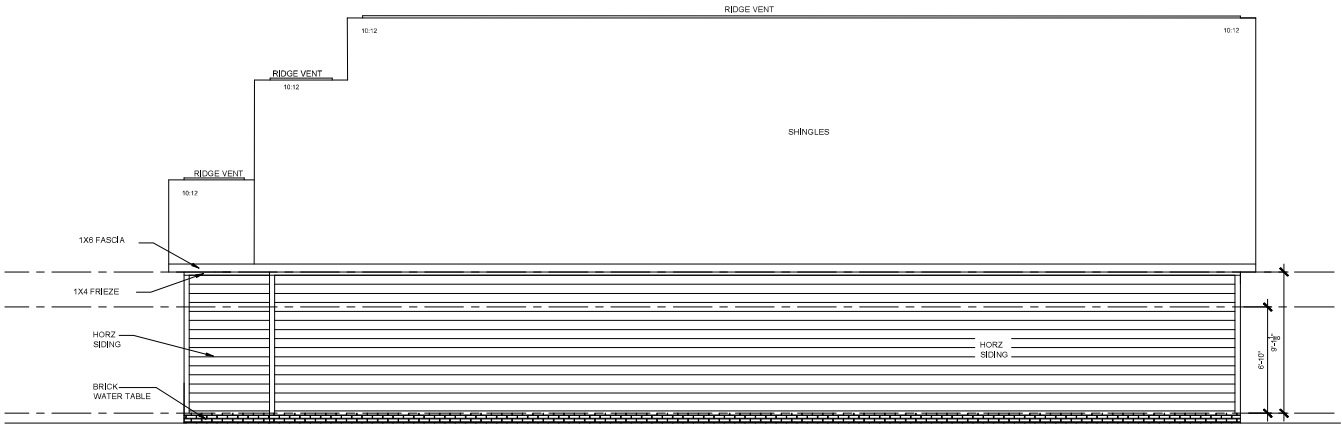
A4.1.5

ELEVATION NOTES:	
- GRADE CONDITIONS MAY VARY FOR INDIVIDUAL SITE FROM THAT SHOWN - WINDOW HEAD HEIGHTS: BASEMENT = 7'-0" U.N.O. ON ELEVATIONS 1ST FLOOR = 8'-0" U.N.O. ON ELEVATIONS 2ND FLOOR = 8'-0" U.N.O. ON ELEVATIONS - ROOFING: PITCHED SHINGLES PER DEVELOPER - WINDOWS: MANUFACTURER PER DEVELOPER, DIVIDED LIGHTS AS SHOWN ON THE EXTERIOR ELEVATIONS - ENTRY DOORS: AS SELECTED BY DEVELOPER, RAISED PANEL AS SHOWN - CHIMNEY AS OCCURS: TOP OF CHIMNEYS TO BE MINIMUM OF 24" ABOVE ANY ROOF WITH IN 10'-0" OF CHIMNEY - ALL EXTERIOR MATERIALS TO BE INSTALLED PER MANUFACTURERS WRITTEN INSTRUCTIONS - PROTECTION AGAINST DECAY: (ALL PORTIONS OF A PORCH, SCREEN PORCH OR DECK FROM THE BOTTOM OF THE HEADS DOWN, INCLUDING POST, RAILS, PICKETS, STEPS AND FLOOR STRUCTURE.)	
KEY NOTES:	
MASONRY: [1] ADHERED STONE VENEER AS SELECTED BY DEVELOPER, HEIGHT AS NOTED [2] MASONRY FULL BRICK AS SELECTED BY DEVELOPER, HEIGHT AS NOTED [3] MASONRY FULL STONE AS SELECTED BY DEVELOPER, HEIGHT AS NOTED [4] P/ SOLDER COURSE [5] ROWLOCK COURSE [6] DECORATIVE KEY. SEE DETAIL TYPICAL [7] CORROSION RESISTANT SCREEN LOUVERED VENTS, SIZE AS NOTED [8] CODE APPROVED TERMINATION CHIMNEY CAP [9] CORROSION RESISTANT ROOF TO WALL FLASHING, CODE COMPLIANT FLASHING MUST BE INSTALLED AT ALL ROOF/WALL INTERSECTIONS [10] STANDING SEAM METAL ROOF, INSTALL PER MANUFACTURERS WRITTEN INSTRUCTIONS [11] DECORATIVE WROUGHT IRON. SEE DETAILS	SIDING: [12] FIBER CEMENT SHAKE SIDING PER DEVELOPER W/ 5/4 X 4 CORNER TRIM BOARDS [13] FIBER CEMENT LAP SIDING PER DEVELOPER W/ 5/4 X 4 CORNER TRIM BOARDS [14] FIBER CEMENT WAVY SIDING PER DEVELOPER W/ 5/4 X 4 CORNER TRIM BOARDS [15] FIBER CEMENT PANE SIDING W/ 1 X 3 BATTS @ 12" O.C. (VINT, BOARD AND BATT SIDING) [16] 1X FIBER CEMENT TRIM OR EQUAL, U.N.O. SIZE AS NOTED [17] FALSE WOOD SHUTTERS, TYP. AS SHOWN SIZE AS NOTED ALL WINDOWS WHOSE OPENING IS LESS THAN 24" ABV. THE FINISH FLOOR AND WHOSE OPENING IS GREATER THAN 72" ABOVE THE OUTSIDE WALKING SURFACE MUST HAVE WINDOW OPENING LIMITING DEVICES COMPLYING WITH THE 2012 IRC SECTION R312.2.



SOMERSET - REAR ELEVATION "B"

SCALE: 1/4"=1'-0" AT 22'X34' LAYOUT 1/8"=1'-0" AT 11'X17' LAYOUT



SOMERSET - RIGHT SIDE ELEVATION "B"

SCALE: 1/4"=1'-0" AT 22'X34' LAYOUT 1/8"=1'-0" AT 11'X17' LAYOUT

NOVUS
HOMES
LLC

These plans and specifications are protected under federal copyright laws. They may not be reproduced, stored in a retrieval system, or transmitted in any form or by any means, electronic, mechanical, photocopying, recording, or by any information storage and retrieval system, without the prior written permission of Obsidian Construction, LLC.



SOMERSET
Single Family
RELEASED FOR CONSTRUCTION

REV.	DATE
# 1	08.28.19
# 2	7.20.20
# 3	7.23.20
# 4	7.30.20

DRAWN BY: ACK
CHECKED BY: XX
DATE: 08-15-18
SHEET NUMBER:

A4.1.4